

vtech[®]

Instruction Manual

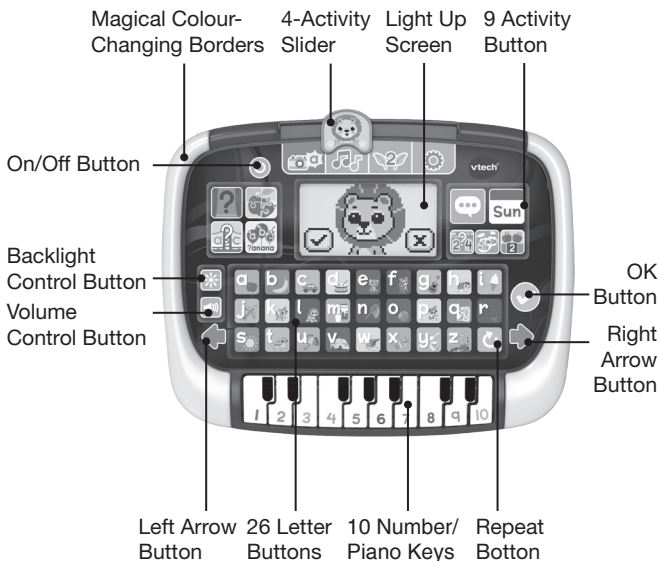
Learn & Discover Tablet



INTRODUCTION

Thank you for purchasing the **VTech® Learn & Discover Tablet!**

The **VTech® Learn & Discover Tablet** includes 12 exciting activities that help to reinforce learning of letters, words, maths and music skills! Magical colour-changing borders brighten your playtime and learning with the lion!



INCLUDED IN THIS PACKAGE

- One VTech® Learn & Discover Tablet
- Quick Start Guide

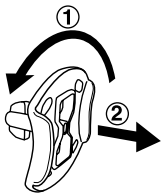
WARNING

All packing materials such as tape, plastic sheets, packaging locks, removable tags, cable ties, cords and packaging screws are not part of this toy and should be discarded for your child's safety.

NOTE

Please save this Instruction Manual as it contains important information.

Unlock the packaging locks:

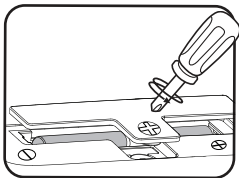


- ① Rotate the packaging lock 90 degrees anticlockwise.
- ② Pull out the packaging lock.

GETTING STARTED

BATTERY INSTALLATION

1. Make sure the unit is turned OFF.
2. Locate the battery cover on the back of the unit. Use a coin or screwdriver to loosen the screw.
3. Install 2 new AA (LR6/AM-3) batteries into the compartment as illustrated. (The use of new alkaline batteries is recommended for maximum performance.)
4. Replace the battery cover and tighten the screw to secure.



WARNING:

Adult assembly required for battery installation.

Keep batteries out of reach of children.

IMPORTANT: BATTERY INFORMATION

- Insert batteries with the correct polarity (+ and -).
- Do not mix old and new batteries.
- Do not mix alkaline, standard (carbon-zinc) or rechargeable batteries.
- Only batteries of the same or equivalent type as recommended are to be used.
- Do not short-circuit the supply terminals.
- Remove batteries during long periods of non-use.
- Remove exhausted batteries from the toy.
- Dispose of batteries safely. Do not dispose of batteries in fire.

RECHARGEABLE BATTERIES:

- Remove rechargeable batteries from the toy before charging.
- Rechargeable batteries are only to be charged under adult supervision.
- Do not charge non-rechargeable batteries.

Disposal of batteries and product



The crossed-out wheellie bin symbols on products and batteries, or on their respective packaging, indicates they must not be disposed of in domestic waste as they contain substances that can be damaging to the environment and human health.



The chemical symbols Hg, Cd or Pb, where marked, indicate that the battery contains more than the specified value of mercury (Hg), cadmium (Cd) or lead (Pb) set out in the Batteries and Accumulators Regulation.

The solid bar indicates that the product was placed on the market after 13th August, 2005.

Help protect the environment by disposing of your product or batteries responsibly.

VTech® cares for the planet.

Care for the environment and give your toy a second life by disposing of it at a small electricals collection point so all its materials can be recycled.

In the UK:

Visit www.recyclenow.com to see a list of collection points near you.

In Australia & New Zealand:

Check with your local council for kerbside collections.

PRODUCT FEATURES

1. ON/OFF BUTTON

To turn the unit on, press the **On/Off Button**. Press the **On/Off Button** again to turn the unit off.

2. MAGICAL COLOUR-CHANGING BORDERS

Four vibrant border colours including red, blue, pink and purple glow as you play.



3. LIGHT UP SCREEN

The backlight of the screen can turn from red to purple, blue or pink.



4. 4-ACTIVITY SLIDER

Slide the **Slider** to choose between 3 activities and settings.

5. 9 ACTIVITY BUTTONS

Press one of the **Activity Buttons** to choose any of the 9 activities.



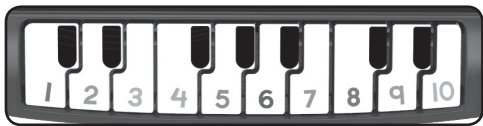
6. LETTER BUTTONS

Press the **Letter Buttons** to learn letters or to answer letter-related questions.



7. NUMBER/PIANO KEYS

Press the **Number/Piano Keys** to learn numbers or to answer number-related questions or to play piano.



8. ARROW BUTTONS



Press the **Arrow Buttons** to navigate on the screen or to select

an option.

9. OK BUTTON

Press the **OK Button** to confirm a selection.

10. BACKLIGHT CONTROL BUTTON

Press the **Backlight Control Button** to change the backlight color of screen between red, blue, pink and purple or to turn the backlight off.

11. VOLUME CONTROL BUTTON

Press the **Volume Control Button** to adjust sound volume. Press the **Left Arrow Button** to reduce the volume level, or press the **Right Arrow Button** to increase the volume level, and then press the **OK Button** to confirm.

12. REPEAT BUTTON

Press the **Repeat Button** to repeat the game instruction or question.

13. AUTOMATIC SHUT OFF

To preserve battery life, the **VTech® Learn & Discover Tablet** will automatically turn off after several minutes of inactivity. The unit can be turned on again by pressing the **On/Off Button**. The unit will also automatically turn off when the batteries are very low. A warning will be displayed on screen as a reminder to change the batteries.

NOTE

If the unit powers down or if the lights fade during play, please install a new set of batteries.

TO BEGIN PLAY

- Press the **On/Off Button** to turn the unit On. A short animation will play and you will be asked to select an activity.
- Slide the **4-Activity Slider** to choose one of the 4 activities or press one of the 9 **Activity Buttons** directly to play.

ACTIVITIES

1. My Camera



Press any of the **Letter Buttons** to learn the alphabet and words, press the **Number/Piano Keys** to learn numbers 1-10.



2. My Piano



Press the **Number/Piano Keys** to play piano notes, press the **Letter Buttons** to hear fun sounds.



3. Planting Fun



Press any of the **Number/Piano Keys**, you will see the number of plants grow and be counted.



4. Settings



In Settings, you can turn the border light on or off, adjust the screen contrast, turn the background music on or off.

Press the **Arrow Buttons** to set and press **OK Button** to confirm.



5. Hidden Letters



Which letter is hidden by the lion? Use the **Arrow Buttons** to move the lion aside and press the **Letter Button** to answer.



6. Picture Puzzle



Press the **Arrow Buttons** to flip the 4 pieces of the picture, press **OK Button** once the picture is formed correctly.



7. Letter Bridge



Find the missing letter to put the letters in order and complete the bridges for the lion to cross.

There are 3 levels. The difficulty level will change depending on your progress.



8. Word Party



Find the missing letter to spell the words. There are 3 levels. The difficulty level will change depending on your progress.



9. Talking Pal

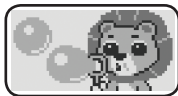


The lion will ask you some questions, press the **Arrow Buttons** to select the answer then press **OK Button** to confirm.



10. My Calendar

Use the **Arrow Buttons** and **OK Button** to choose a day of the week and see the lion's fun daily activities.



11. Number Bridge

Find the missing number to put the numbers in order and complete the bridges for the lion to cross.

There are 3 levels. The difficulty level will change depending on your progress.



12. More or Less

Different quantities of objects fall down the screen, press the **Arrow Buttons** and **OK Button** to choose more or less objects.

There are 3 levels. The difficulty level will change depending on your progress.



13. Counting Fun

A number of objects will be shown one by one on screen, count how many there are and press the **Number/Piano Keys** to answer.

There are 3 levels. The difficulty level will change depending on your progress.



CARE & MAINTENANCE

1. Keep the unit clean by wiping it with a slightly damp cloth.
2. Keep the unit out of direct sunlight and away from any direct heat sources.
3. Remove the batteries when the unit is not in use for an extended period of time.
4. Do not drop the unit on a hard surface and do not expose the unit to moisture or water.

TROUBLESHOOTING

If for some reason the unit stops working, please follow these steps:

1. Turn the unit **Off**.
2. Interrupt the power supply by removing the batteries.
3. Let the unit stand for a few minutes, then replace the batteries.
4. Turn the unit **On**. The unit should now be ready to use again.
5. If the unit still does not work, install a new set of batteries.

CONSUMER SERVICES

Creating and developing **VTech®** products is accompanied by a responsibility that we at **VTech®** take very seriously. We make every effort to ensure the accuracy of the information, which forms the value of our products. However, errors sometimes can occur. It is important for you to know that we stand behind our products and encourage you to call our Consumer Services Department with any problems and/or suggestions that you might have. A service representative will be happy to help you.

UK Customers:

Phone: 0330 678 0149 (from UK) or +44 330 678 0149 (outside UK)

Website: www.vtech.co.uk/support

Australian Customers:

Phone: 1800 862 155

Website: support.vtech.com.au

NZ Customers:

Phone: 0800 400 785

Website: support.vtech.com.au

PRODUCT WARRANTY/ CONSUMER GUARANTEES

UK Customers:

Read our complete warranty policy online at vtech.co.uk/warranty.

Australian Customers:

**VTECH ELECTRONICS (AUSTRALIA) PTY LIMITED –
CONSUMER GUARANTEES**

Under the Australian Consumer Law, a number of consumer guarantees apply to goods and services supplied by VTech Electronics (Australia) Pty Limited. Please refer to vtech.com.au/consumerguarantees for further information.

**Visit our website for more
information about our products,
downloads, resources and more.**

www.vtech.co.uk
www.vtech.com.au

